

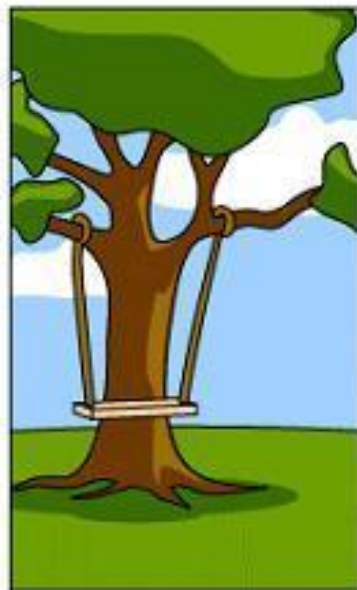


# Funding and Planning for the EV Transition

Chris White  
Frontier Energy, Inc.



How it was explained



How it was understood



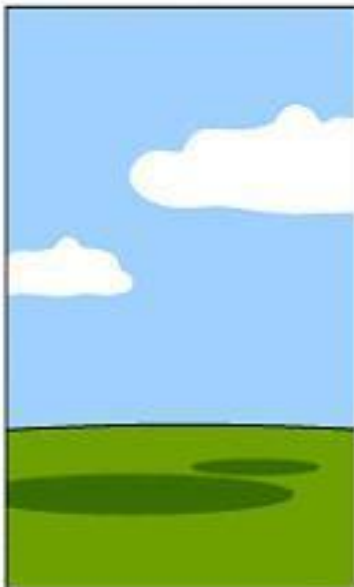
How it was speced



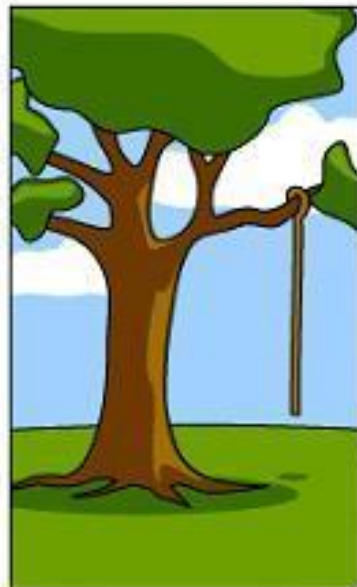
How it was approved



How it was promised



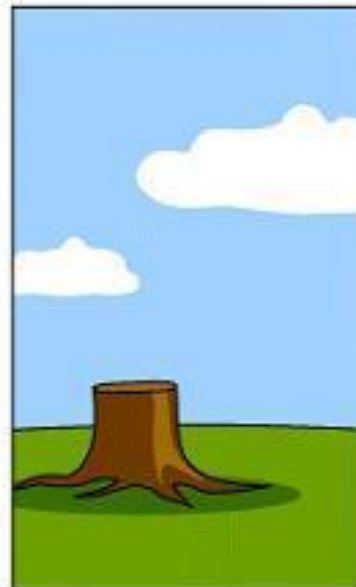
How it was documented



How it was budgeted



How it was billed



How it was supported



What was really wanted

# 10-year transition plan



	2021	2022	2023	2024	2025	2026-30
Light-duty vehicle procurement	\$1,156,200	\$678,043	\$151,379	\$191,797	\$151,736	\$2,528,658
Charger procurement and installation*	\$675,500	\$675,500				
Annual charger maintenance fee*	\$12,400	\$22,300	\$22,300	\$22,300	\$22,300	\$111,500
Solar PV procurement and installation*	\$534,650	\$534,650				
BES procurement and installation	\$1,020,000					\$1,020,000
Back-up generator procurement	\$827,000					
Reserved funds for procurement of heavy-duty EVs for evaluation	\$250,000	\$250,000	\$250,000	\$250,000	\$250,000	

# Know your vehicles

- Do you *really* have all the vehicles in your inventory?
- Does the make and model match the fuel type?
- Do you *really* know which department has the vehicle?
- Do you *really* know where it sleeps at night?

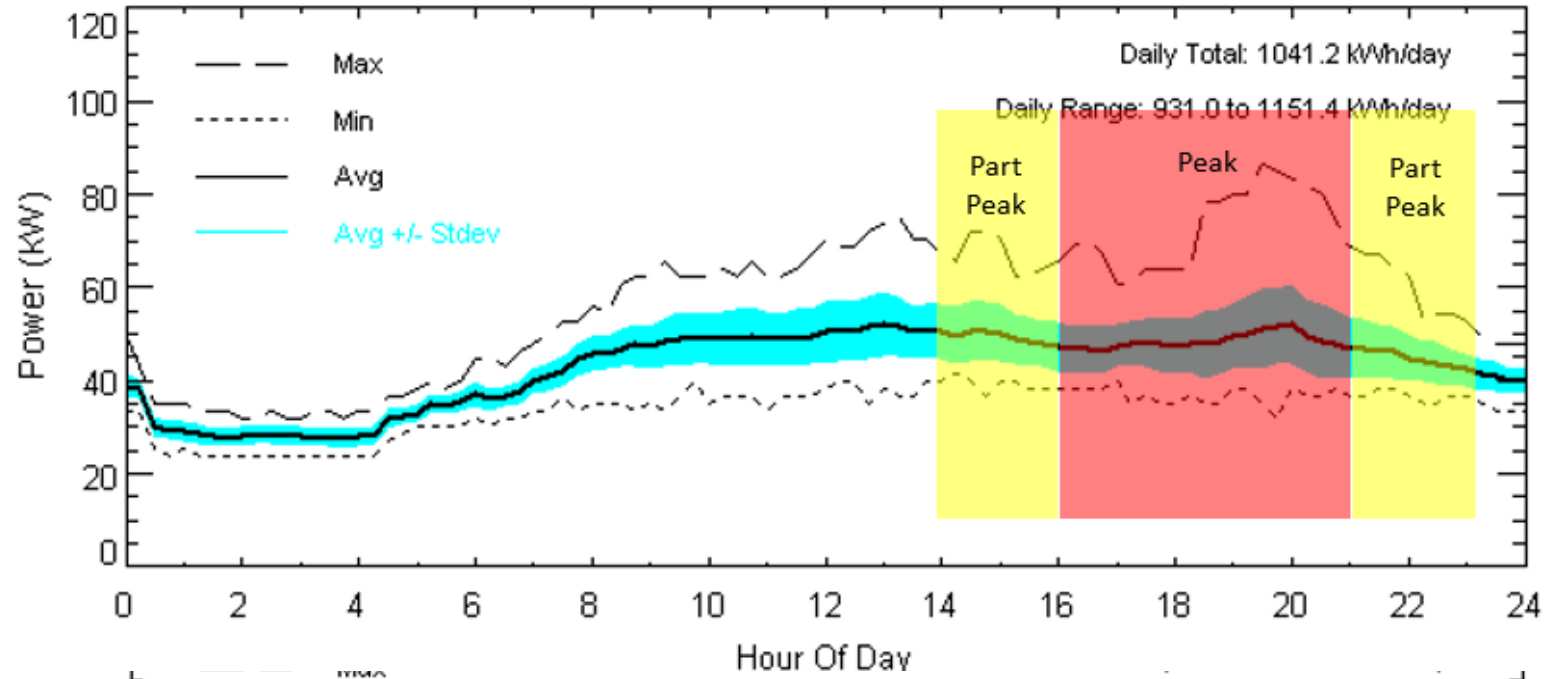
# Know their operation

- How long does it sit still? Where does it sit still?
- What jobs does the vehicle support? Does that job need this vehicle?
- Who fuels the vehicle and where? Is the tank always full?
- What is the vehicle's exceptional day?
- Which vehicles are needed in emergencies?
- Did COVID change the way vehicles are used? Is that permanent?

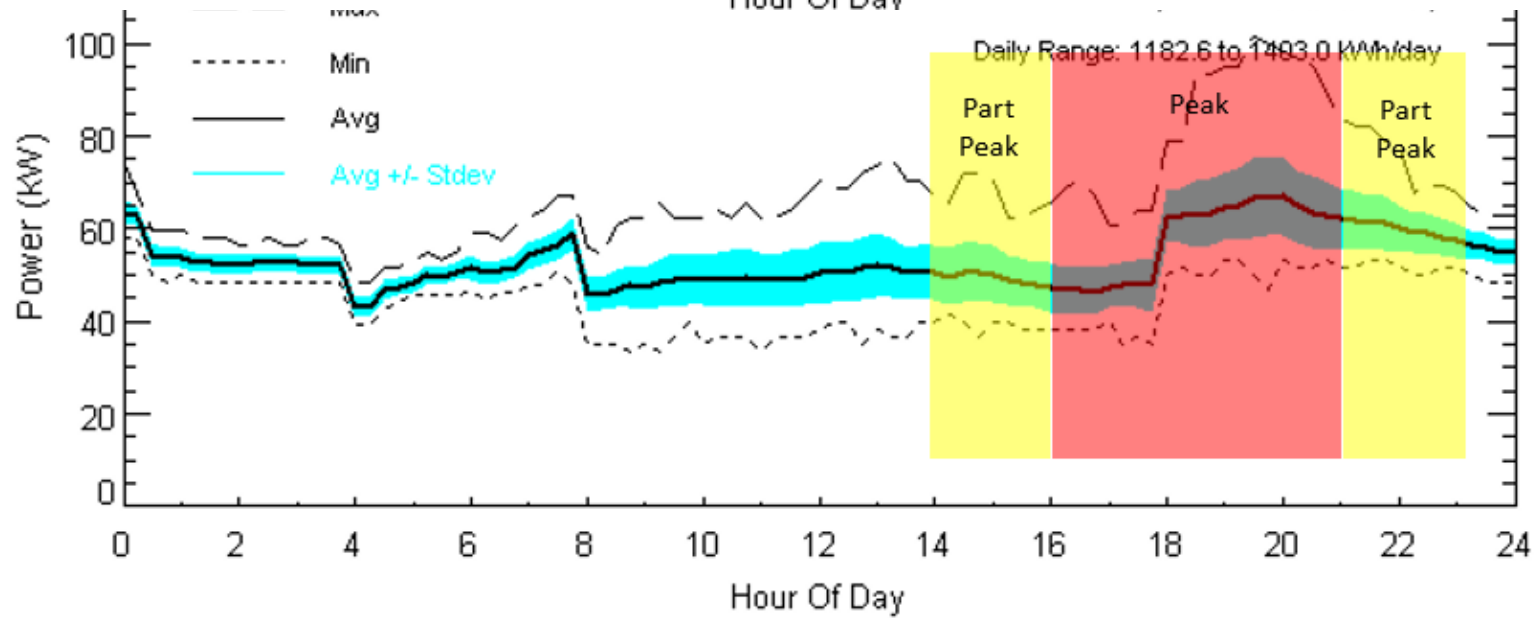
# In your replacement plan...

- Which can't be replaced with a cost-competitive EV?
  - Can you switch to RNG or renewable diesel?
- Which could be replaced with a different body style?
- Which could be replaced if customized or upfitted?
- When do you need to bring in evaluation units?

## Without EV charging



## With EV charging



# In your budget

- Assume that prices will increase, not come down
- Operating costs need to include peak power
- Do not build in rebates and incentives
- Use caution with LCFS credits
- Do the electrical work once
- Add funds for vehicle evaluation



# Funds to consider

- Can you use CMAQ for fleet transition planning?
- Can facilities budgets pay for panel upgrades, PV, ESS?
- Can ESS and generators come from OES funding?
- Does your utility have utility-side-of-the-meter upgrade funding?
- Can you partner with a CCA or REN for planning?
- Keep an eye out for upcoming block grants....