



GEOTAB®

Nate Veeh
Business Development Manager, Government
nateveeh@geotab.com

Customers of Every Size & Industry, Globally

- Over 40,000 customers and over 2 million vehicle subscriptions
- World's largest provider of telematics globally
- Geotab's solution scales to fit customers with 1 up to 200,000 and is used many different ways

Why do Customers want telematics?

Customized to cover your fleet management needs

Scalable to cover your needs



Productivity

- Customer service times
- Identify unexpected stops
- Accurate arrival and departure times
- True trip miles



Optimization

- Increase fuel efficiency
- Decrease idle time
- Track speeding
- Record engine diagnostics
- Vehicle maintenance



Safety

- Collision notifications
- Risk management reports
- In-vehicle coaching
- Seat belt use
- Driving in reverse



Sustainability

- Reduce fuel consumption
- Track CO₂ emissions
- Fleet electrification
- EV performance monitoring and reporting
- GO Recycling



Compliance

- Electronic driver logs
- Tax reporting
- Vehicle inspection reports



Expandability

- Flexible technology
- System integration (Software Development Kit)
- Hardware Add-Ons & Software Add-Ins

Sustainability Pillar

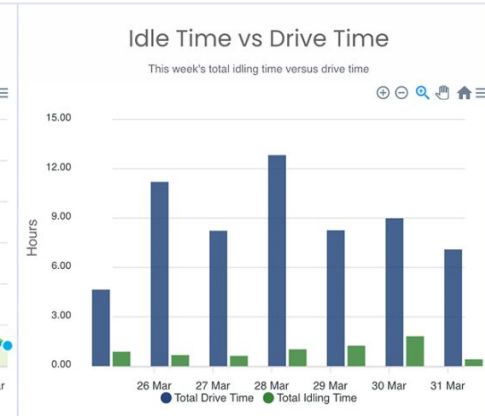
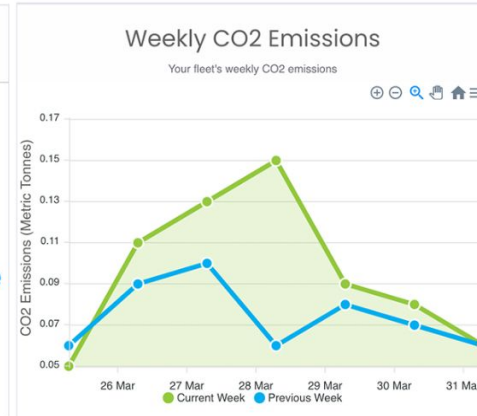
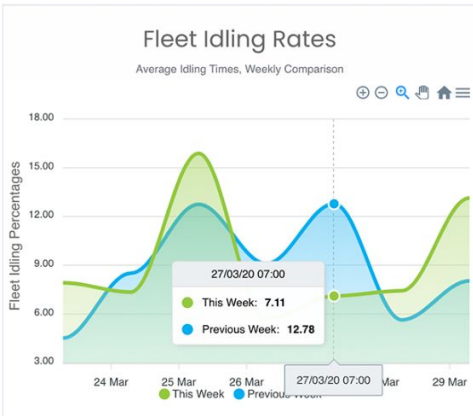
Make progress towards sustainability targets with telematics. Measure the environmental impact of your fleet and take action to reduce your footprint.

- Increase fuel efficiency
- Optimize routes to reduce miles driven
- Reduce vehicle idling
- Coach drivers on best practices
- Track CO₂ emissions
- Manage vehicle repairs
- **Electric Vehicle Suitability Assessment**
 - Determine best-fit EVs for your fleet
 - Financial, range and environmental factors considered
- **EV management**
 - Monitor EV energy usage
 - Charging history, including time and location
 - Real-time data on battery charge percentage and charging status
- **Smart city data insights** to help municipalities tackle road congestion and reduce emissions



New Green Fleet Dashboard add-in available on Marketplace.

GEOTAB. | Marketplace



GO Electric with EVSA (Electric Vehicle Suitability Assessment)

Fleets looking to add EVs, even if they have a few already, likely have questions



Performance Requirements

- Will an EV be able to perform the **required tasks** in my fleet?
- Will the EV meet my drivers' **range** requirements?
- Will the battery still perform in **extreme conditions**?



Vehicle Selection

- Which model of vehicle is best for each vehicle class I have?
- Which vehicles are the best candidates for replacement by EVs?



Return on Investment

- What will the impact of EVs be on my fleet's operational budget?



Environmental Impact

- By how much will my fleet's carbon emissions go down?

Lifetime Replacement Cost Summary

Assessment Recommendation v.s. Non-EV Replacement scenario

Total Cost Procurement Maintenance Fuel and Electricity Others

COST EFFICIENCY

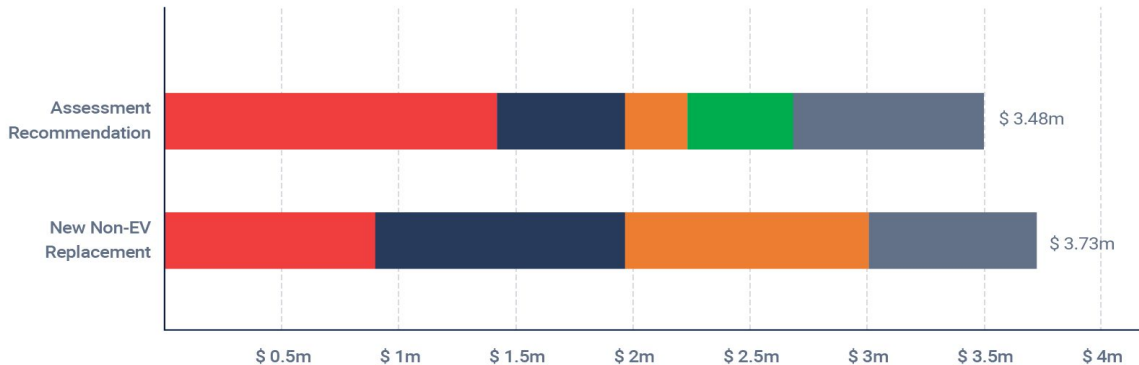
For vehicles with recommended EV best fit

Current cost/km:

Est. EV cost/km: \$ 0.06

Lifetime Savings: \$ 235, 137 (6.3%)

Procurement Maintenance Fuel Electricity Others



Collecting EV Data

10/01/19 07:32:18 - 10:36:11 (3h 3m 53s)

Winston Park Dr + Portland Dr, Oakville, ON L6H 7V2, Canada

38% - 99%

4 mi/kWh ▲ 9.8 kWh



JZ BEV Delivery LDV 875

Distance: 22 mi Energy used: 9.49 kWh

Driving range assurance
Based on vehicle's driving history



Typical day:
47 miles



Longest day driven:
97 miles

  57% ▶

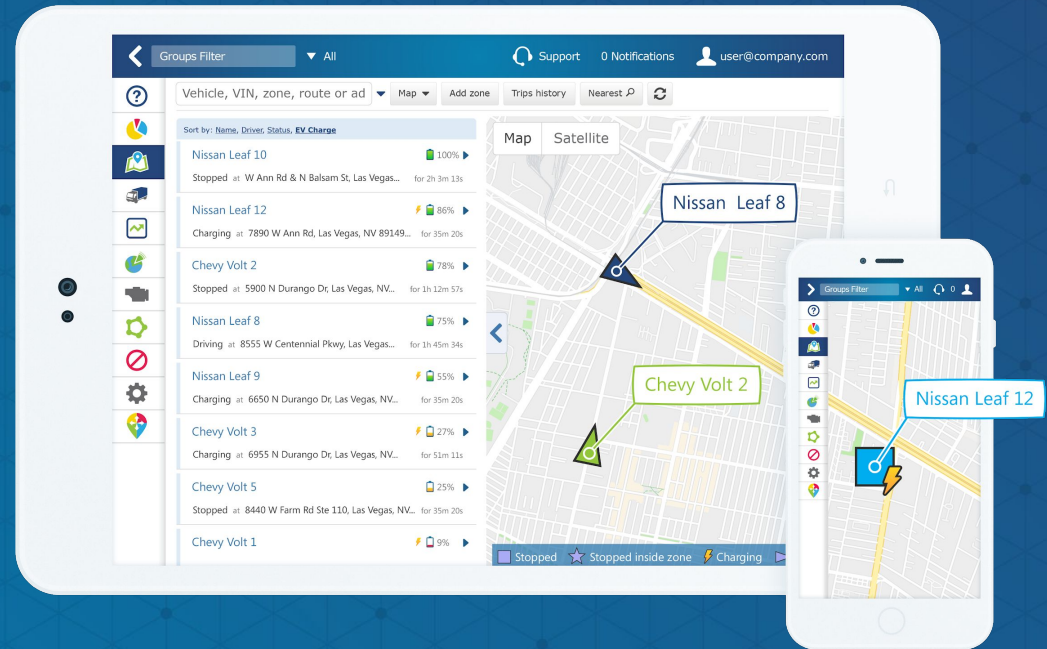


Electric Vehicle Fleet Management

Effective performance monitoring of both EVs and traditional vehicles in one platform for the first time

- Compare fuel consumed vs energy consumed in the fleet
- A complete charging history of all your electric vehicles in the fleet similar to fuel fill ups
- Real-time notifications for charging status and battery charge %

[Watch video](#)



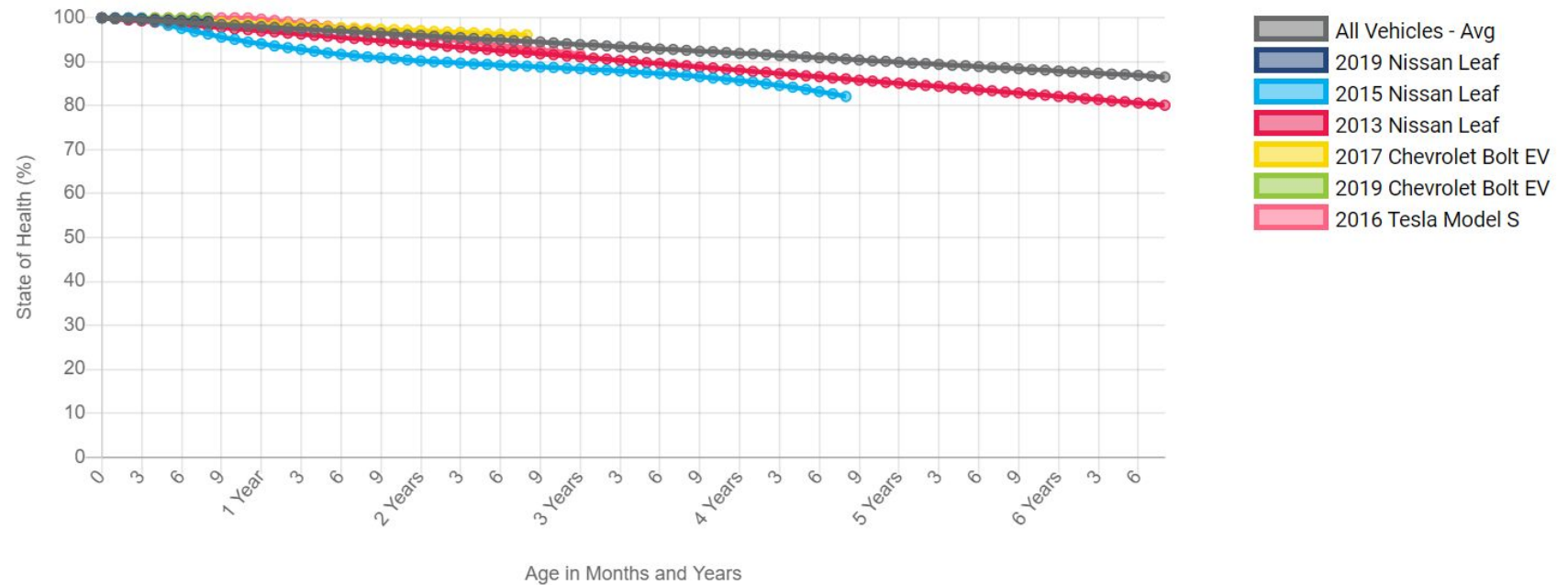
EV charging report and real-time notifications

EV Battery Degradation Comparison Tool

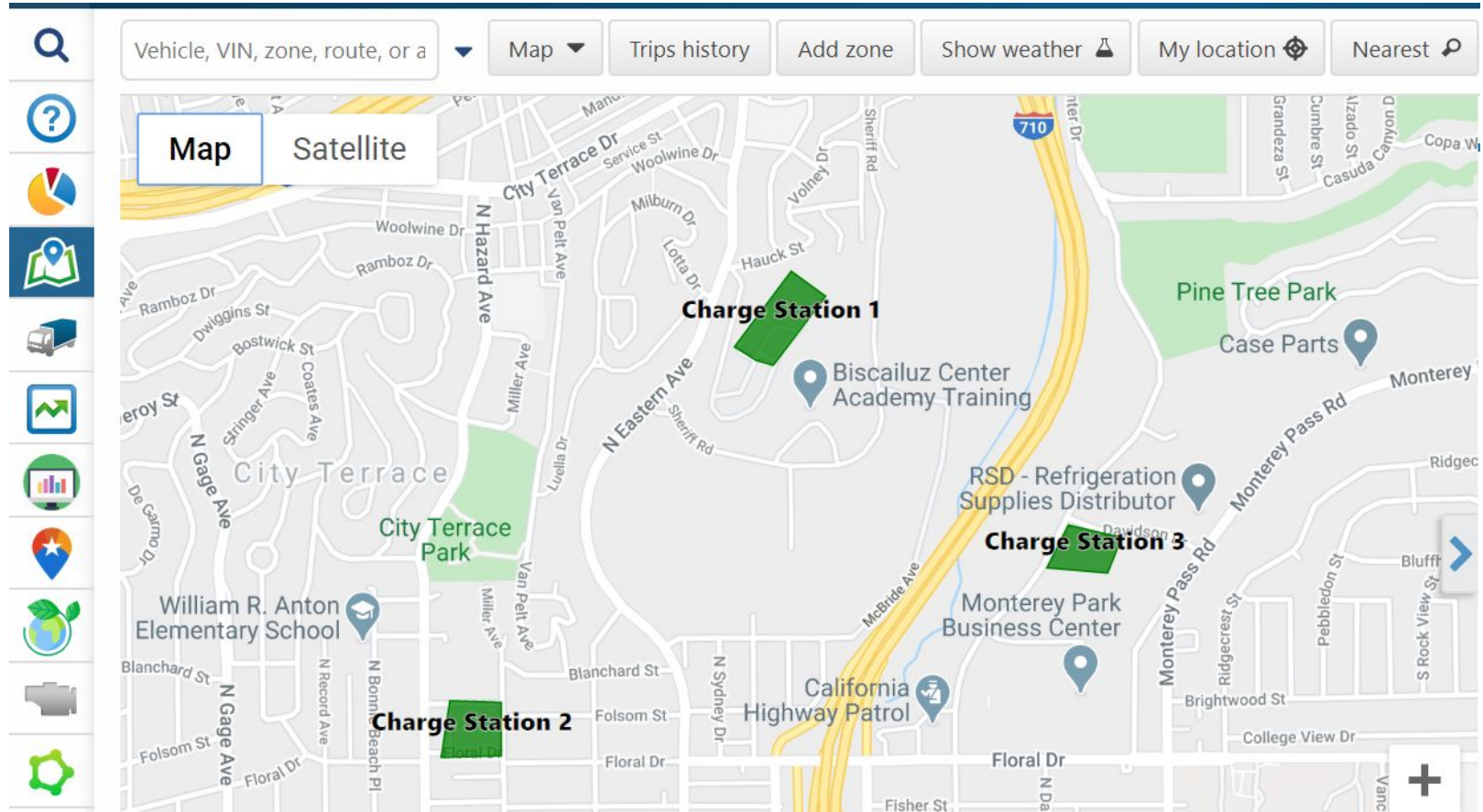
Compare average battery degradation over time for different vehicle makes and model years. Degradation is based on observed data so newer model years will have shorter degradation lines.

Add vehicles by clicking the +. To remove a vehicle from the chart, click its name in the legend.

Make & Model Year



Missed Opportunities to Charge



Contracts Available for Procurement

State of California Telematics Contract

- Competitively Bid
- Contract ID #01-19-58-69
- [Calprocure Website](#)



Sourcewell

- Contract #022217-GEO
- [Sourcewell Contract Website](#)



Nate Veeh
Business Development Manager, Government
nateveeh@geotab.com