



THE WORLD'S FIRST PURPOSE-BUILT TYPE III ELECTRIC AMBULANCE



KEY TAKE AWAYS

- ✓ World's first and ONLY full size type 3 electric ambulance
- ✓ Completely NEW, rethought, redesigned Demers ambulance Forward FX paramedic centric module lay-out
- ✓ NEW state of the art, 100% patented, Demers Forward FX seat providing 5 to 10x more opportunities for paramedics to remain buckled in while caring for a patient
- ✓ Lion5 purpose built class 5 chassis specifically for ambulances addressing most paramedic ergonomic, comfort, health and safety features





1 - DBCM GROUP OF COMPANIES

MISSION / VISION

Mission

We **make life better**,
one **relationship**
and one **vehicle**
at a time.

Vision

To be the **partner of choice**,
dedicated to **safety** and
innovation, delivering an
exceptional customer
experience through
empowered employees.

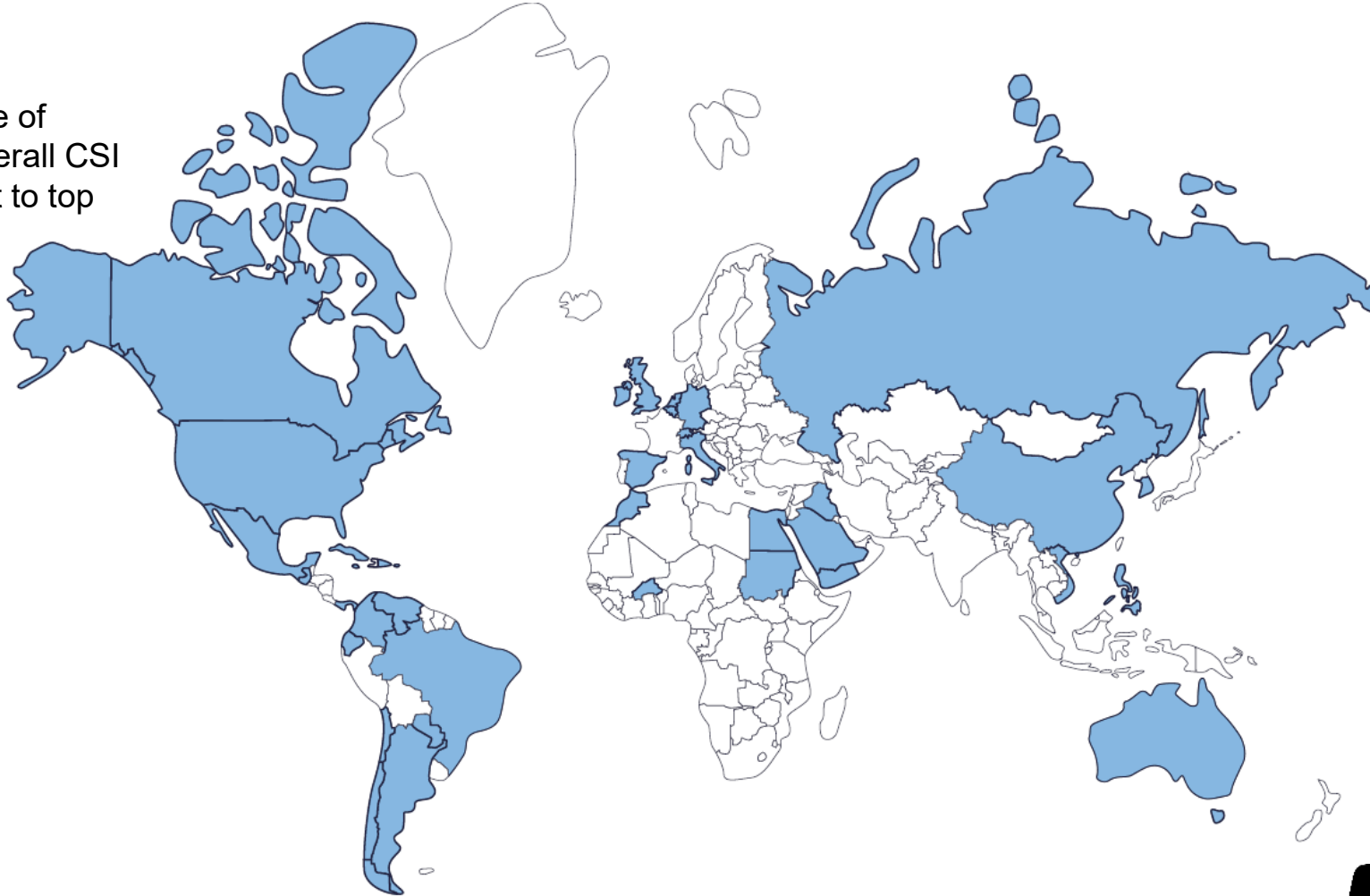
WHO WE ARE

- 175+ years of combined manufacturing experience in emergency and specialty vehicles
- Largest ambulance manufacturer in Canada, second-largest in North America
- Leverage collective knowledge and resources for greater scale in innovation and industry leadership
- Demers-Braun-Crestline-Medix has 1140 collective employees
- 12 production and services center sites across North America
- Operational efficiency, and manufacturing economies of scale
- Customer Care available coast to coast ie. service centers, sales, parts etc.



GLOBAL FOOTPRINT

Strong market share of 30% in N.A. and overall CSI and NPS equivalent to top automotive OEMs.



Strong customer relationships across the Middle Eastern market and a large existing fleet in the region.

Combined platform and product offering allow us to target additional countries in Middle East, Africa and Latin America to build a scale international business.

DBCM has existing fleet in over 43 countries today.

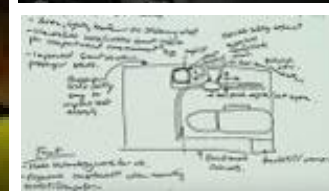
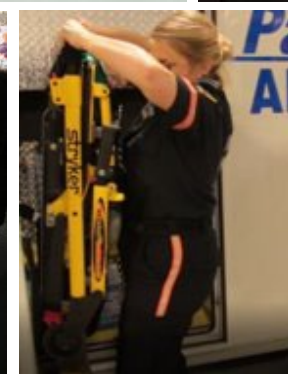
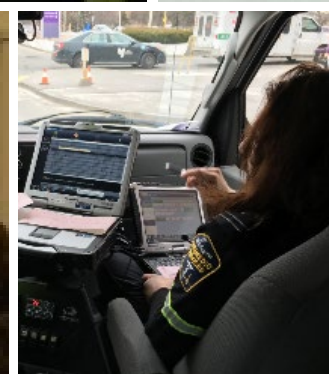
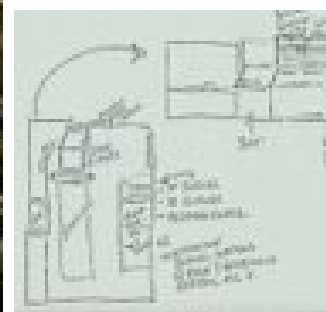
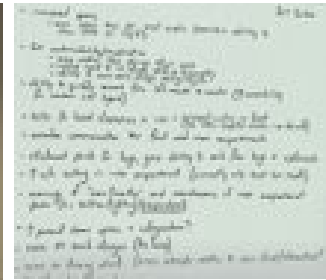


3 - GENESIS OF eFX PROJECT: EMS INDUSTRY & PARAMEDICS

OBJECTIVES – PARAMEDIC CENTRIC

- Design an ambulance based around the Paramedic needs, for safe patient care.
- Safe, State of the art design to include clinical needs, safety and ergonomic requirements.
- Keep the Paramedics and patient safe, while allowing them to provide care under any/all conditions.
- Design based on criteria and simulation performances.
- Challenge and shift existing paradigms and status quo.

PARAMEDIC CENTRIC R&D PROCESS





4 - LION ELECTRIC COMPANY

 **LION ELECTRIC**

- Founded in 2008 – 13 years of dedication to transportation and their electrification
- 950 + Employees
- More than 13 million zero-emission kilometers traveled (8 077 825 miles).
- 8 experience centers and 2 R&D centers in the United States and Canada

LION ELECTRIC

The most experienced manufacturer of all-electric heavy-duty vehicles on the road in North America.

- 450+ vehicles on the road.
- 7 purpose-built all-electric vehicles available as of 2021.
- Optimized Battery Thermal Management System (BTMS) to ensure maximized performance of batteries even in the most extreme conditions.





5 – DNA: LION5 CHASSIS PURPOSE BUILT FOR EMS APPLICATIONS FEATURES & BENEFITS

 **LION ELECTRIC**

THE LION5 CHASSIS

BUILT FOR DEMERS eFX AMBULANCE

- The Lion5's (class 5 GVWR) chassis was purposefully designed to be an ambulance.
- Lion5 is a purpose-built all electric chassis, offering improved comfort and the **first and only chassis** on the market which is ergonomically **adapted to the EMS Industry logistics and paramedics needs.**



TECHNICAL SPECIFICATIONS OF THE FRONT CABIN - ERGONOMICS

Larger cabin for more comfort for paramedics

Increased seat recline capacity

Additional storage space for personal belongings

Better lumbar support

Increased legroom

Ergonomic and safe digital dashboard for better access to information and less distraction while driving, including at night (adaptive backlighting)

PARAMEDIC CENTRIC FRONT CAB

Comfort benefits from our unique front cab design

- Overall category leading cab ergonomics
- Ergonomic seating area with ample leg and shoulder room
- Storage for individual personal equipment (PPE)
- Cup holders and other locations for individual items
- Steering wheel with integrated ambulance functions
- Category leading front and side visibility
- Easy access electronics and plug-ins



6 - LION GRANT AND TECH. SUPPORT

 **LION ELECTRIC**

FACILITATING THE EV TRANSITION JOURNEY FOR CUSTOMERS



Full turnkey solution for charging infrastructure, **including V2G**

Dedicated team committed to selling, managing and maintaining customer projects

Reseller of **global tier 1 infrastructure** (recent contract signed with ABB)

Truck/bus deliveries **timed with infrastructure installation**



Value-added tool to boost productivity & generate operational savings

Embedded in **all Lion vehicles**

Real-time data tracking, including GHG emissions, **for all EV components**

Powered by **best-in-class telematics technology**



Best-in-class customer service

Question answering and problem resolution **handled immediately on-site**

First line diagnostic service with preventive maintenance and troubleshooting

Daily training available to drivers & operational teams



LION GRANT SUPPORT

To easy transition towards electrification there are multiple incentive / grant available throughout different programs. Lion's Grant Team is dedicated to assist customers with identifying and applying for grant funding opportunities across the United States and Canada.

The team continuously monitoring federal, state and provincial grants that might become available.

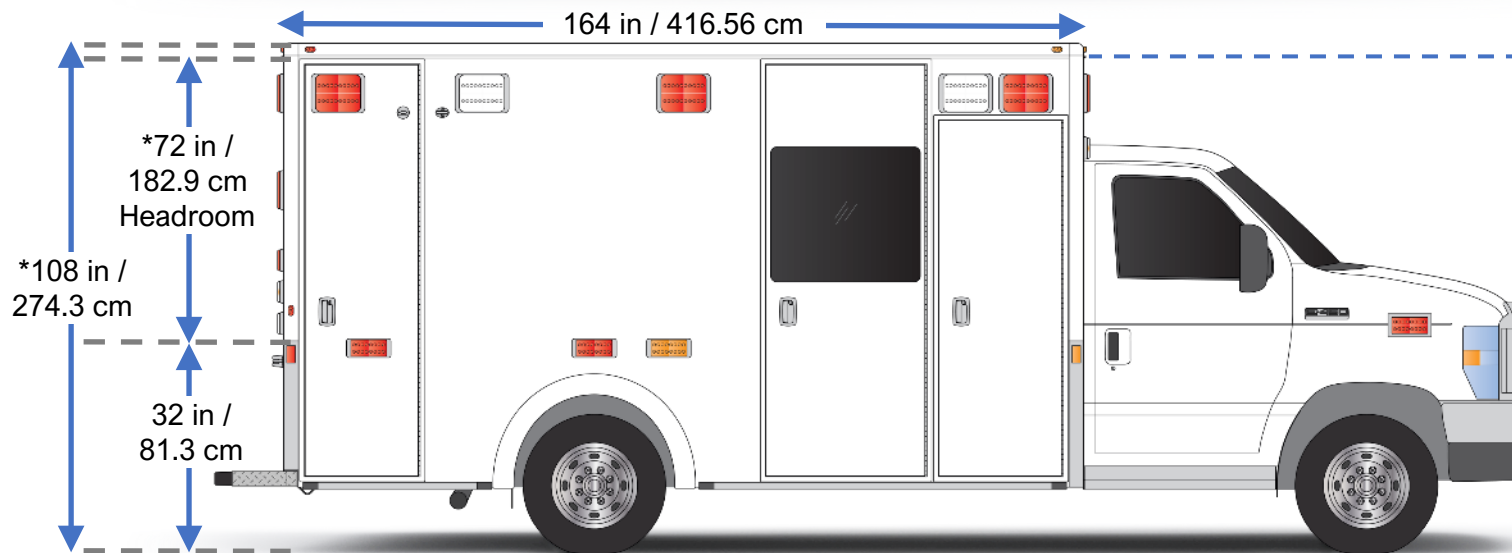
We have the strongest ability to identify, leverage and secure funding opportunities, and the most extensive heavy-duty electric vehicle experience on the road in the industry.





7 - DNA: eFX MODULE FEATURES & BENEFITS

COMPARISON TYPE III MX164 vs eFX

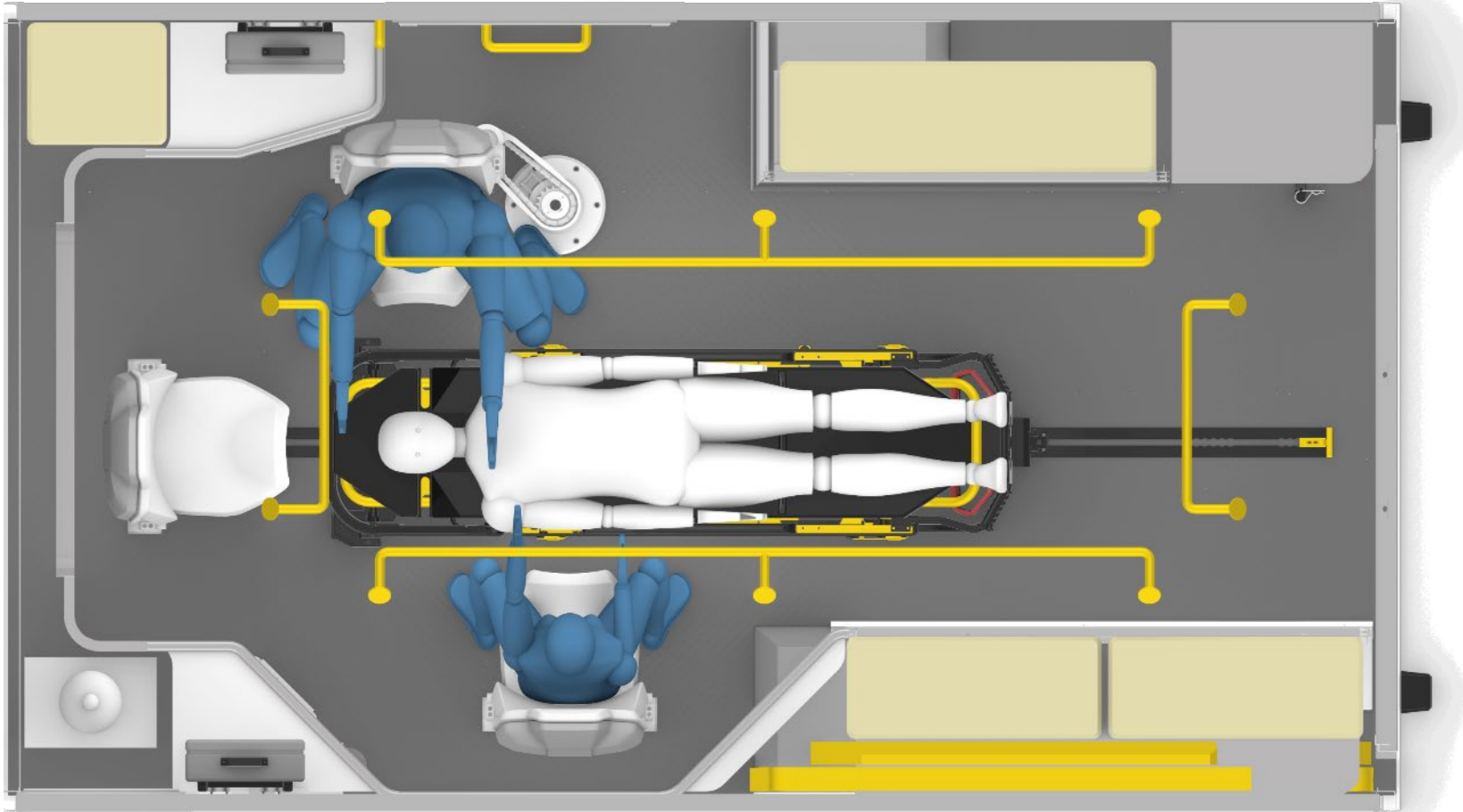


20 in / 50.8 cm added to eFX module length

*measurements may vary per country and region



FX MODULE OVERVIEW



- Stretcher and work environment moved aft of wheel wells and relocated electric box to improve working area dimensions.
- Action seats allowing paramedics to be mobile while being fasten.
- Over head console giving access to multiple common supplies.
- Action bags giving access to specific intervention supplies
- Accessible preparation surfaces and drawers.
- Exterior access to emergency supply located on curb side or rear of ambulance.
- Centralized supply refurbishing.
- Drop-in bags

PRODUCT FEATURES

MEDICAL COMPARTMENT

Medical cabin is 20% longer than a comparable model

Wider rear door opening

Relocation and re-invented cabinets

Patent pending new ergonomic seat

Less noise and vibration



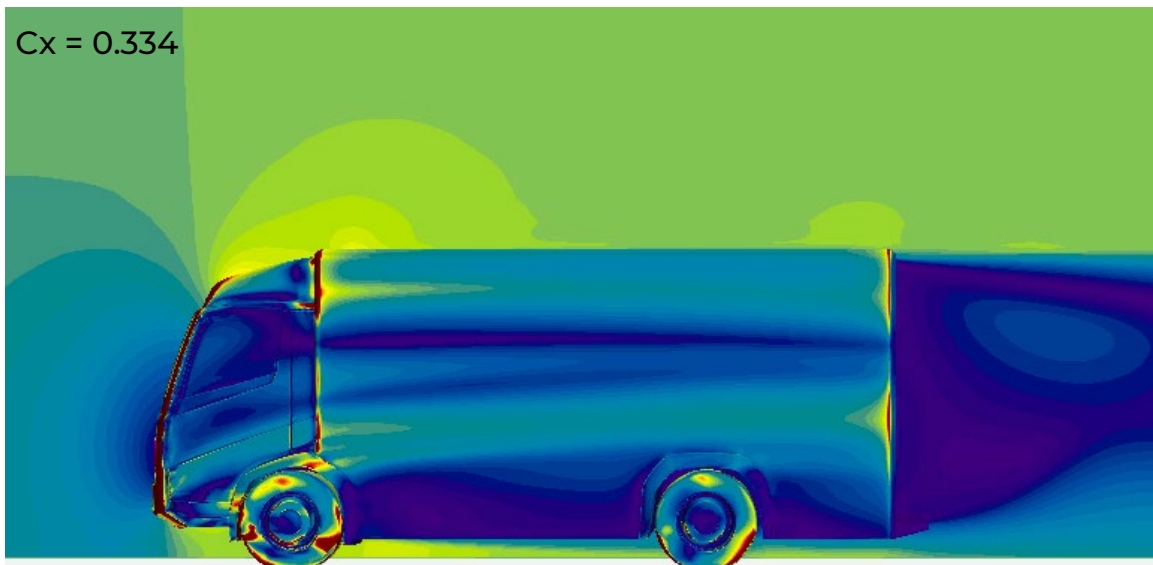
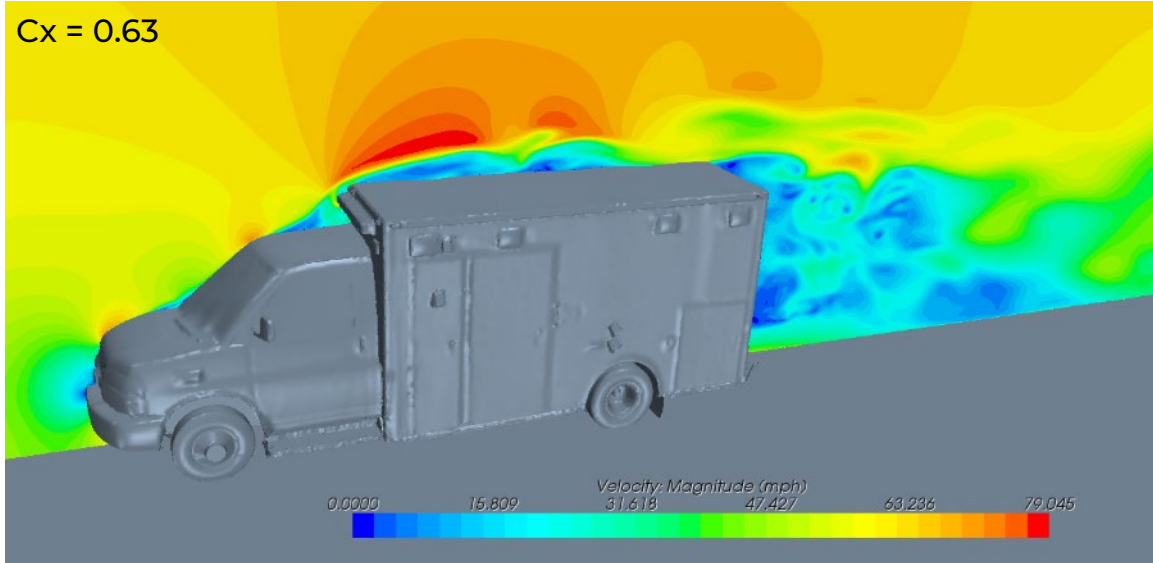
PRODUCT FEATURES

ACTION SEAT

PARAMEDIC CENTRIC R&D PROCESS



DEMERS AERODYNAMICS



Benefits

- Improve vehicle autonomy
- Optimal energy consumption
 - Less charging
 - Less battery required
 - less weight

PRODUCT FEATURES

FLUSH MOUNT WINDOWS

Benefits

- Automotive style windows for better visibility and corrosion resistance
- Lower repair costs
- Prevents leaks



