



California Energy Commission (CEC)

# IDEAL ZEV Workforce Pilot Project

Awardee: Community Resource Project (CRP)  
Project Name: ZEV/SEED

Presented to : Sacramento PEV Collaborative  
11/15/2022  
Presenters: Luis Sanchez (CRP)  
Angelina Rahimi (Aura Planning)

# IDEAL ZEV Workforce Pilot Project

- **IDEAL:** Inclusive, Diverse, Equitable, Accessible, and Local  
**ZEV:** Zero Emission Vehicle
- Project Duration: June 2022- May 2024
- Funding Agency: California Energy Commission
- Lead Applicant: Community Resource Project
- Sub Recipient: California Mobility Center & Aura Planning
- Vendors: CleanStart, Lucid XR, Pem Motion, Sacramento Public Library, SCCC

# ZEV SEED Workforce Pilot Project

- SEED: Sustainable Employment Education Destination
- 5 Cohorts: Refugees, Women, Youth, Auto Mechanics, Construction Workers
- Areas of Training: EVCI Installation  
ZEV Manufacturing & Maintenance  
ZEV Driving and Operation
- Public Engagement: 1000
- Number of Trainees: 100
- Number of Jobs: 75

# ZEV SEED NEEDS ASSESSMENT

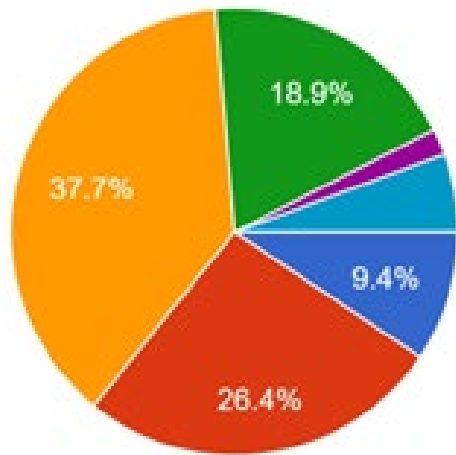
## Target communities:

- Low income and disadvantaged
- High unemployment
- High linguistic isolation and foreign-born population
- No public EV chargers

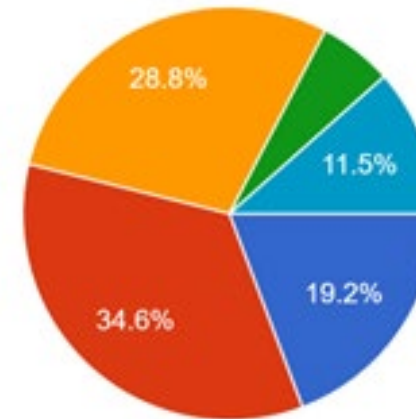
## Surveys:

- Surveys done by Students
- In 9 languages
- Preferred training afterhours
- Said transportation was their main barrier to employment
- Most women preferred jobs with flexible hours

# ZEV SEED NEEDS ASSESSMENT

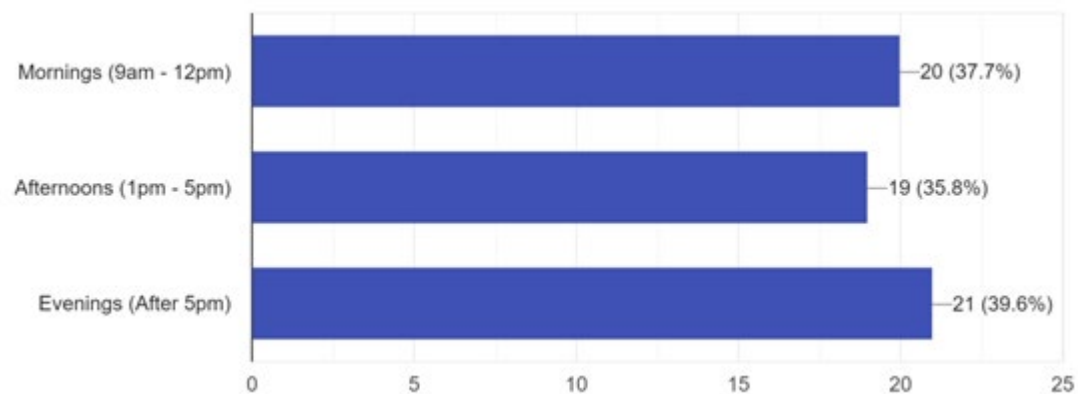
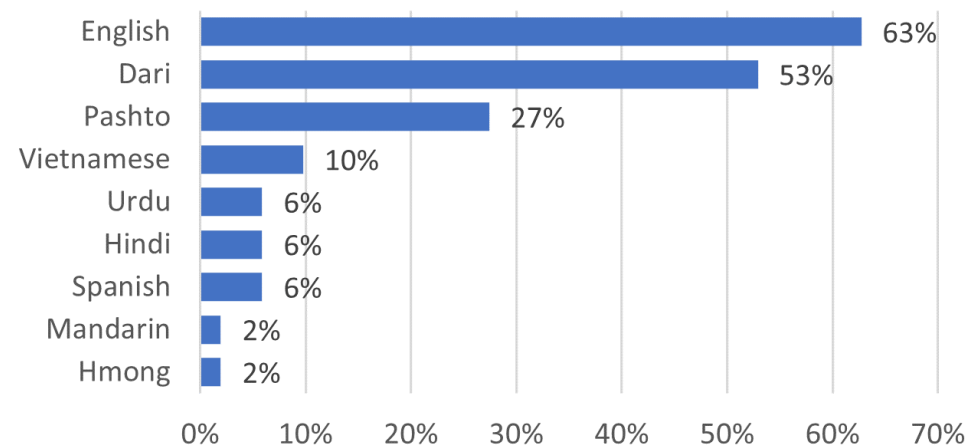


- 1 hour a day
- 2 hours a day
- 3 hours a day
- 4 hours a day
- 5 hours a day
- 6 or more hours a day

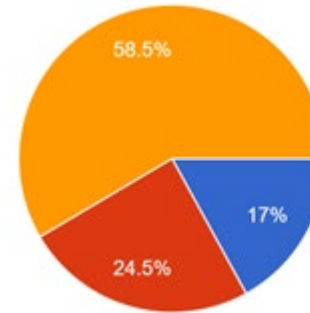


- 1 month
- 2 months
- 3 months
- 4 months
- 5 months
- 6 months

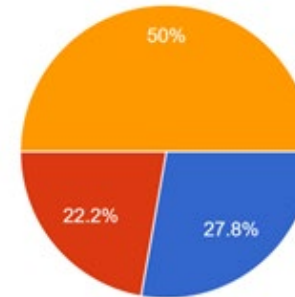
# ZEV SEED NEEDS ASSESSMENT



# ZEV SEED NEEDS ASSESSMENT



- No English
- Some English
- Fluent in English



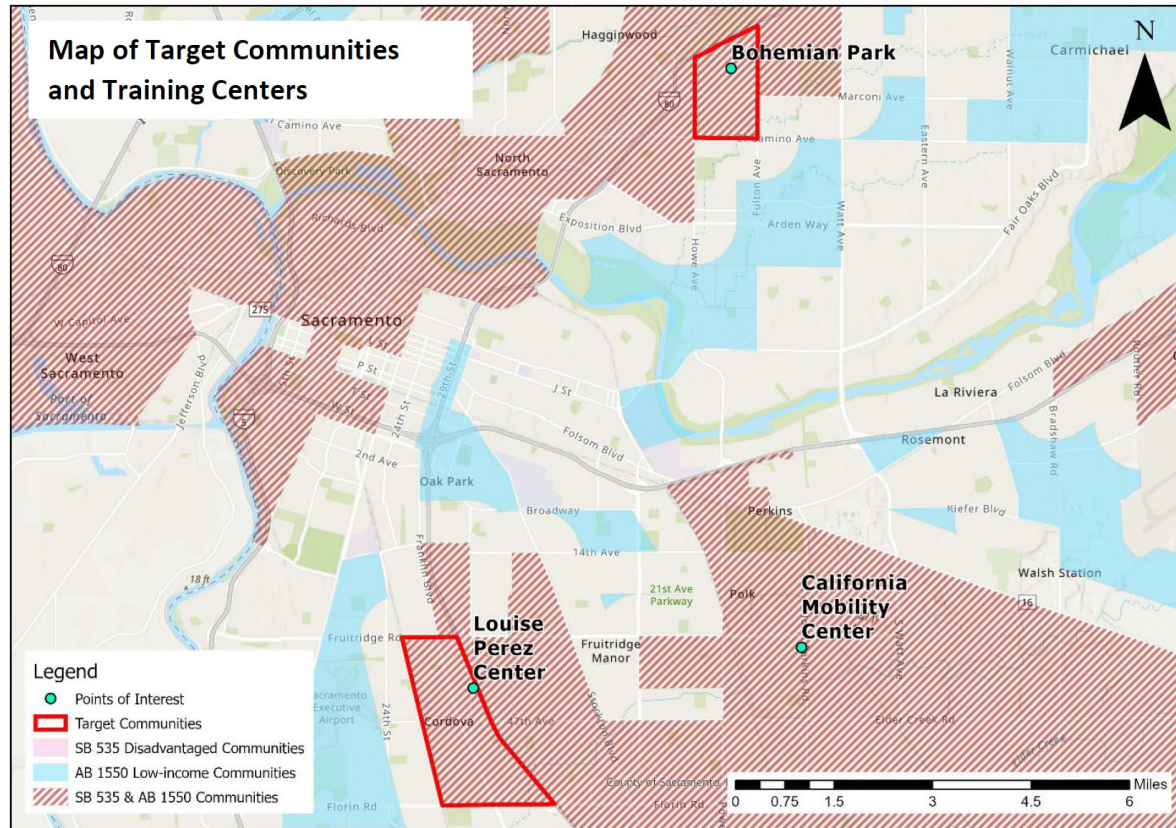
- Employed (Full-time)
- Employed (Part-time)
- Unemployed

# High-Tech, High-Touch Approach

- Classroom Training: 60 Hours (CRP)
- Hands-on Training: 84 Hours(CMC)
  
- High Tech: Using Virtual Reality Apps, and GIS Mapping, CMC Ramp Up Facility
- High Toch: Hiring Local Students, Community Ambassadors, Overcoming Language Barriers



# ZEV SEED Workforce Pilot Project



Interactive GIS Map: ZEV Employers, Priority Communities, Demographics, Transportation